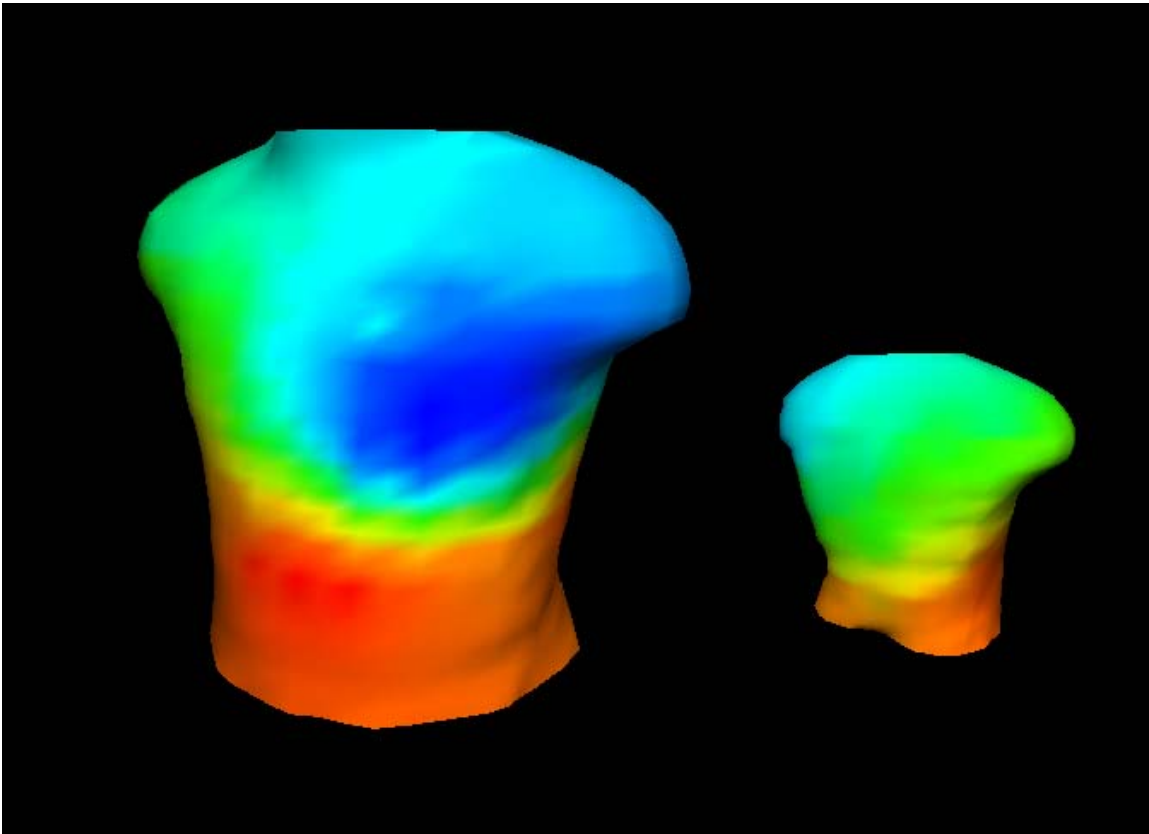


Beyond the 12 lead ECG: Improving time to diagnosis



**Sunrise Symposium Breakfast
6:00 AM, Friday, April 27
Magnolia Ballroom**

Join Drs. Ezra Amsterdam, William Brady, and Brian O'Neil for presentations and discussion that will cause you to reconsider how you are evaluating chest pain.

Beyond the 12 Lead ECG: Improving Time to Diagnosis

Learning objectives: At the conclusion of the presentation, the participants will be able to:

- Understand the value of earlier diagnosis of AMI and where improvements are possible
- Describe the critical pathway for the diagnosis of chest pain by ECG and biomarkers (and why this isn't sufficient for many patients)
- Discuss non-invasive technology beyond the 12 lead ECG that may facilitate earlier diagnosis
- Identify high risk patient types with initially non-diagnostic ECG who may benefit from a more comprehensive non-invasive assessment
- Describe the design and rationale for OCCULT-MI

Agenda:

6:00 AM Registration and breakfast

6:10 AM Introductions and background

Ezra Amsterdam, MD

6:15 AM Chest Pain in the ED: Unmet Needs in the Diagnostic Pathway

William Brady, MD

6:25 AM Improving Diagnosis in Patients with Chest Pain

Brian O'Neil, MD

6:35 AM We *Can* Improve Time to Treatment Through Time to Diagnosis

Ezra Amsterdam, MD

Ezra Amsterdam, MD

Professor of Medicine

Director, Coronary Care Unit

University of California at Davis

William Brady, MD

Professor, Emergency Medicine

Vice-Chair, Department of Emergency Medicine

University of Virginia at Charlottesville

Brian O'Neil, MD

Professor, Emergency Medicine, Wayne State University

Research Director, Department of Emergency Medicine

William Beaumont Hospital

This symposium is supported by HeartScape Technologies, www.heartscope.com

